

serie
BEP
EXTRAFLAT
platform

STAINLESS STEEL
PAINTED STEEL



DESIGN & QUALITY
MAXIMUM RELIABILITY

www.giropes.com | giropes@giropes.com | [Linkedin:giropes-sl](https://www.linkedin.com/company/giropes-sl)
Pol. Empordà Internacional, C/Molló 15-16 | 17469 VILAMALLA- (Girona) SPAIN
T(34) 972 527 212 · F(34)972 527 211



BEP

min 300 kg
max 3000

load cells 4 u

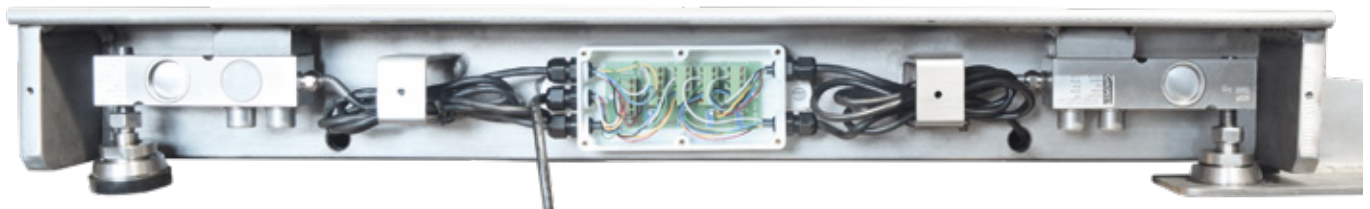
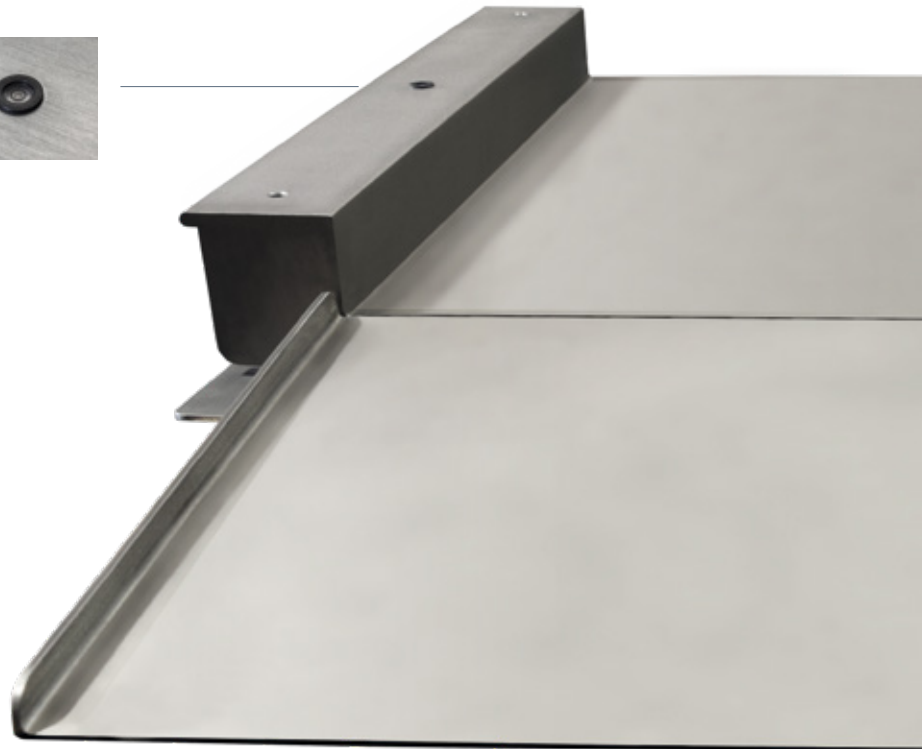


PLATFORM
CE-M

BEP Platforms can be verified in legal metrology CE-M.

BUBBLE LEVEL INCLUDED

The bubble level is included to improve its calibration and its type approval so that it can be used in legal metrology.

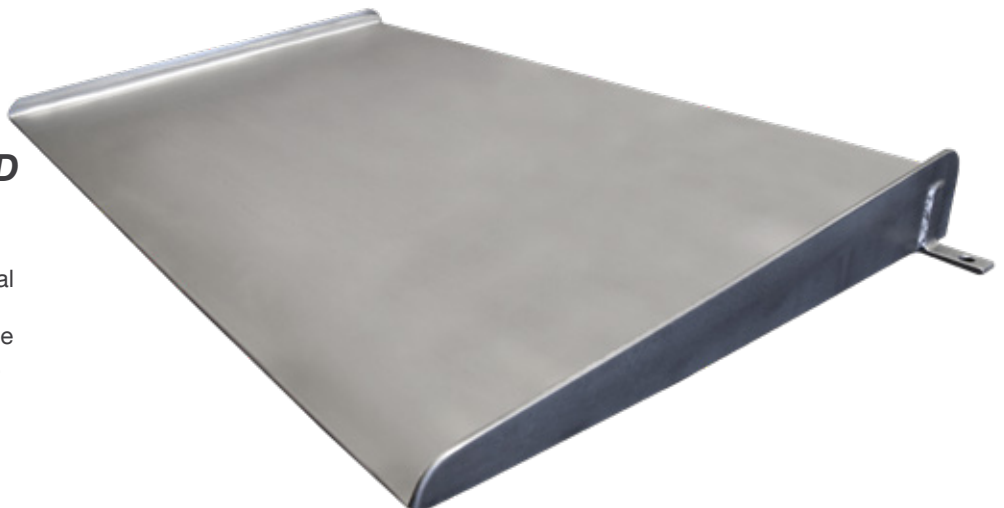


ADJUSTABLE

Load cells are leaned on the adjustable in height pivotal foot, to adjust the height of the scale and adapt it to the irregularities of the ground or to the imperfections in the ditch.

OPTIONAL SECOND RAMP

There is also the possibility to install a second access, optional ramp so that the operators can get into the platform by one side and exit it by the opposite side. In this way the path to follow is easier as it is in one direction.





EXTRAFLAT PLATFORM

It is specially designed for situations when there is some difficulty to access the platform.

The platforms of the BEP series are meant to be used as an ultra-flat scale. The hand trucks with their loads can get to the weighing area via a frontal access ramp.

STRUCTURE

The profile of its structures varies depending on the dimensions of the platform.

ERGONOMIC AND COMFORTABLE DESIGN

Its ultra-flat surface together with the addition of a ramp with a slope of the 10% allows the operators an easy access to the weighing area.

RANGE OF USES

It can be used for all types of weighing in different industrial sectors thanks to its wide range of functions and to its easy access.



LOAD CELLS

G3S - For painted platforms

Shear beam load cell.
Fully in steel alloy.
3000 divisions OIML R60 class C3.
Hermetically sealed, fully in welded.
Protection IP68.

G5i - For stainless steel platforms

Shear beam load cell.
Fully stainless steel.
3000 divisions OIML R60 class C3.
Hermetically sealed, fully in welded.
Protection IP68.

G35n - 0,3t - 6t (optional)

Shear beam load cell.
Nickel-plated steel.
3000 divisions OIML R60 class C3.
Hermetically sealed, fully in welded.
Protection IP66.
Available in ATEX (optional).

G35i - 0,3t - 6t (optional)

Shear beam load cell.
Fully stainless steel.
3000 divisions OIML R60 class C3.
Hermetically sealed, fully in welded.
Protection IP69K.
Available in ATEX (optional).

TECHNICAL FEATURES

Type	Platforms with 4 load cells
Material	Painted steel Stainless steel AISI304
Installation	On ground
Dimensions	From 800 x 800 mm to 2000 x 1500 mm
Height	Height surface 50 mm Total height surface 115 mm
Capacities	300 kg to 3000 kg
Thickness of the sheet	5 mm
Inside access	Removing lateral cover
Cable length	5 m
Support	4 pivoting feet adjustable in height
Screws	In stainless steel and zinc-coated

serie
BEP
EXTRAFLAT
platform

REFERENCES BEP

Dimensions (mm)	Capacity (kg)	Readout (g)	COMPLETELY PAINTED	COMPLETELY STAINLESS STEEL AISI 304
			# Code	# Code
800 x 800	300	100	170297	170301
800 x 800	600	200	170298	170302
1000 x 1000	300	100	170257	170260
1000 x 1000	600	200	170258	170261
1250 x 1000	600	200	170266	170269
1250 x 1000	1500	500	170268	170270
1250 x 1000	3000	1000	170824	170271
1250 x 1250	600	200	170272	170274
1250 x 1250	1500	500	170273	170275
1250 x 1250	3000	1000	170825	170276
1500 x 1250	600	200	170280	170283
1500 x 1250	1500	500	170281	170284
1500 x 1250	3000	1000	170282	170285
1500 x 1500	1500	500	170286	170288
1500 x 1500	3000	1000	170287	170289
2000 x 1500	1500	500	170291	170293
2000 x 1500	3000	1000	170292	170294

REFERENCES SECOND RAMP

Dimensions (mm)	Length (mm)	Incline	COMPLETELY PAINTED	COMPLETELY STAINLESS STEEL AISI 304
			# Code	# Code
800 x 800	500	10%	180089	180105
1000 x 1000	500	10%	180077	180099
1250 x 1000	500	10%	180091	180100
1250 x 1250	500	10%	180084	180101
1500 x 1250	500	10%	180085	180102
1500 x 1500	500	10%	180086	180104
2000 x 1500	500	10%	180087	180159

ACCESSORIES

Description	# Code
Supplement for nickel steel load cell G35n for painted structure and sheet platform up to 3000 kg	240130
Supplement for stainless steel load cell G35i for stainless steel platform up to 3000 kg	240131
Supplement for stainless steel ATEX load cells and ATEX junction box, for stainless steel platforms to 3000 kg	240088
Supplement for stainless steel ATEX load cells and ATEX junction box for painted up to 3000 kg	240089
Additional metre of cable	240085

* Consult the catalog for more accessories

Gs
PRO

Software PC
Giscale Pro

Software to manage and control production lines from our GI400 SERIES indicators.

